

Forestville, MD

7704 Marlboro Pike I-495 & Exit 11/Pennsylvania Ave./Rt. 4

Available For Sale

5400 sf

Free-standing
Retail building
on
Marlboro Pike

15 Dedicated Parking Spaces

For more information
please contact:

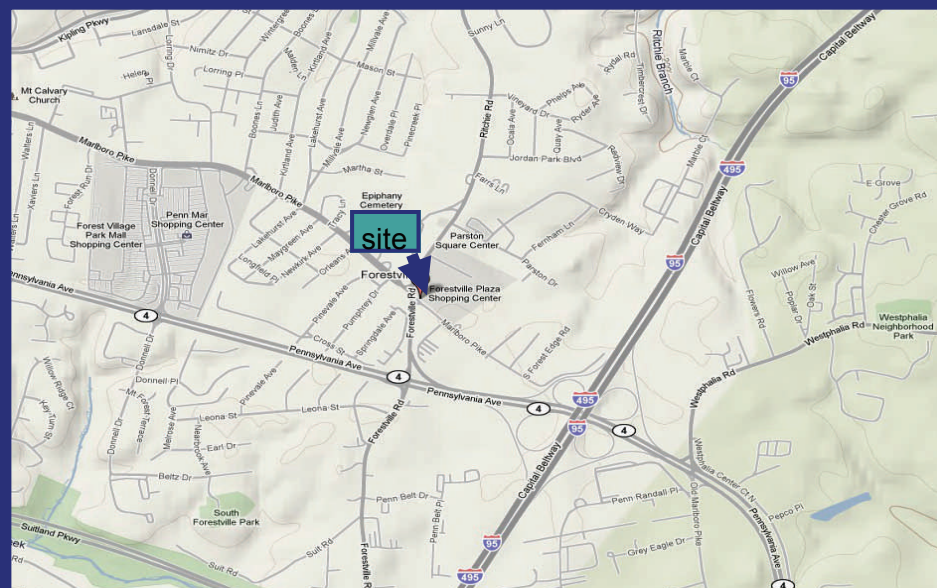
Les Sax

lsax@saxrealty.com

O)240-497-1192
F)240-497-1070



Building currently leased by Mattress Discounters



Population	1 Mile	3 Mile	5 Mile
2010 Total Population:	8,362	76,386	240,910
Pop Growth 2010-2015:	(4.00%)	(3.50%)	(2.40%)
Per Capita Income:	\$26,848	\$24,457	\$25,249
Average Age:	38.20	33.70	35.70

SAX REALTY, INC.

4931 Cordell Avenue, Bethesda, MD 20814

Forestville, MD

7704 Marlboro Pike
at I-495 & Exit 11/Pennsylvania Ave./Rt. 4

Available for Sale

5400sf

Free-standing
Retail building

on
Marlboro Pike

15 dedicated
parking spaces

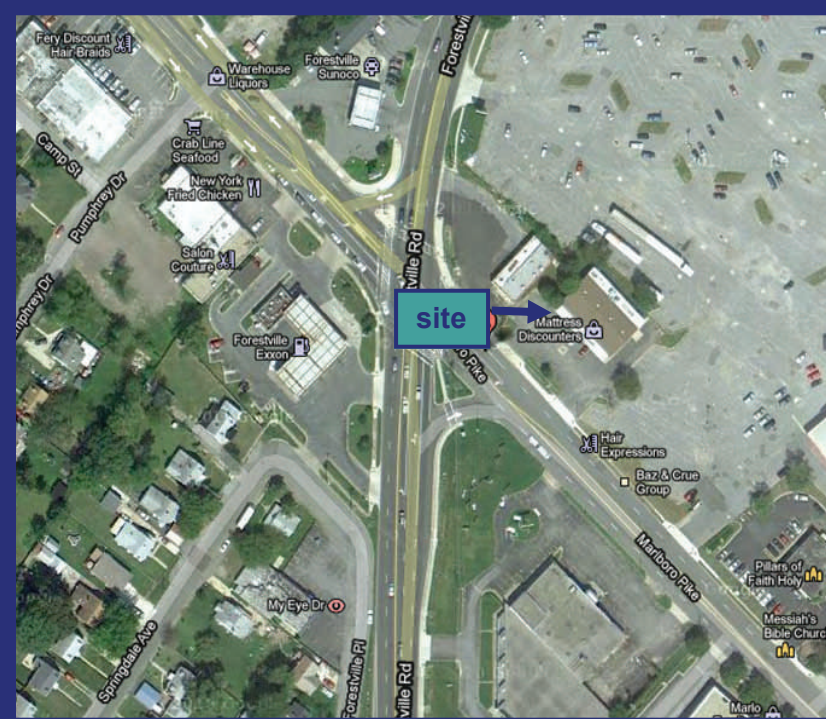
For further information
please contact:

Les Sax

lsax@saxrealty.com

O)240-497-1192

F)240-497-1070



Near other retailers:

CVS

TARGET

MARLO

JCPenney

**KAY
JEWELERS**

SAX REALTY, INC.

4931 Cordell Avenue, Bethesda, MD 20814